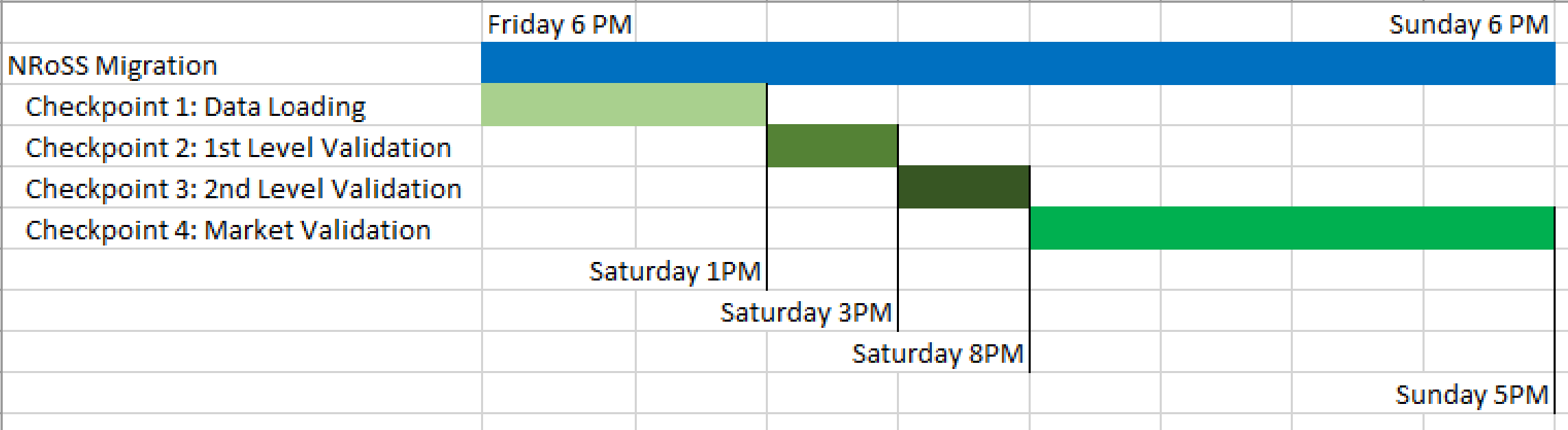




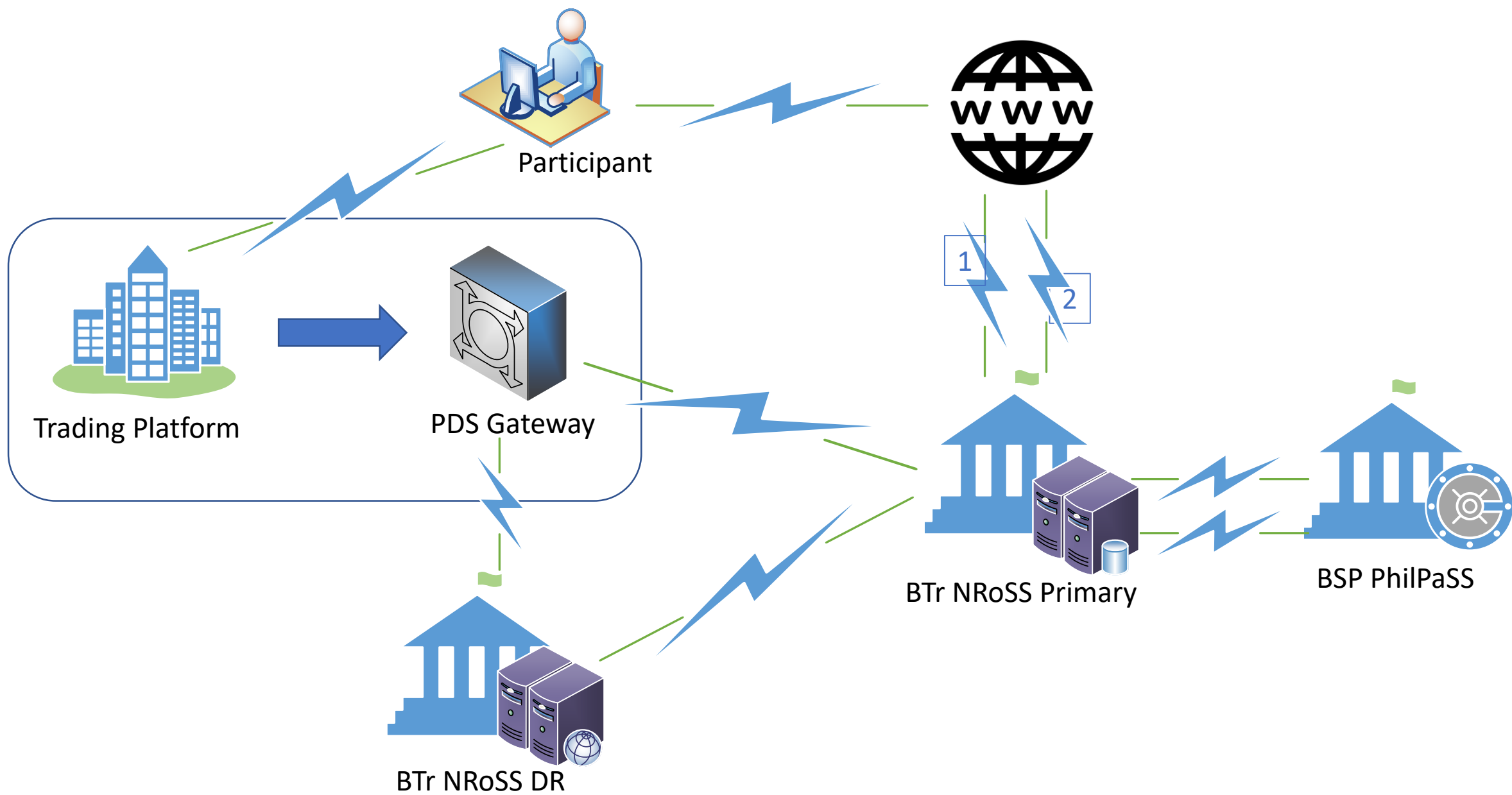
NRoSS Cut-over weekend

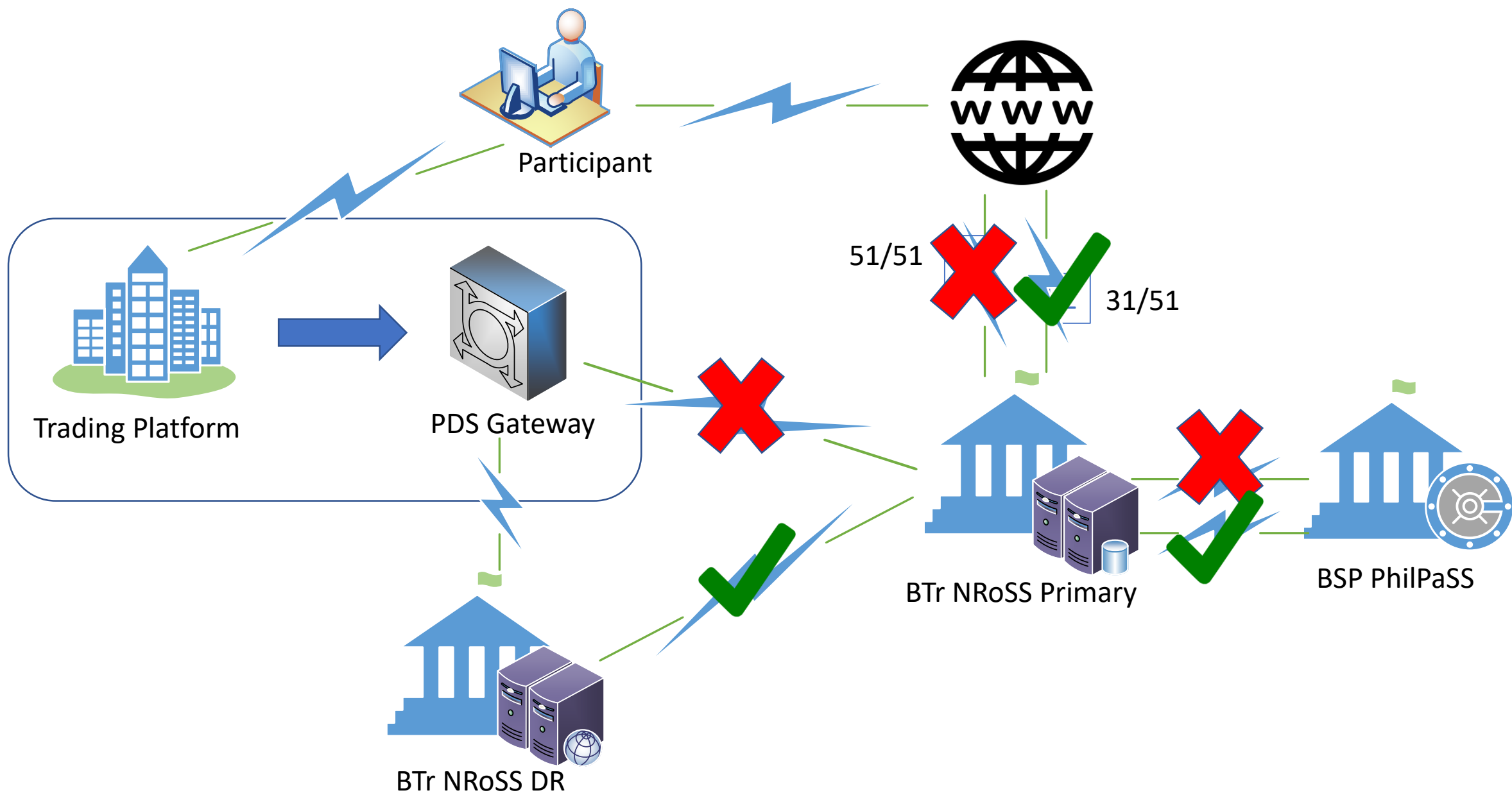


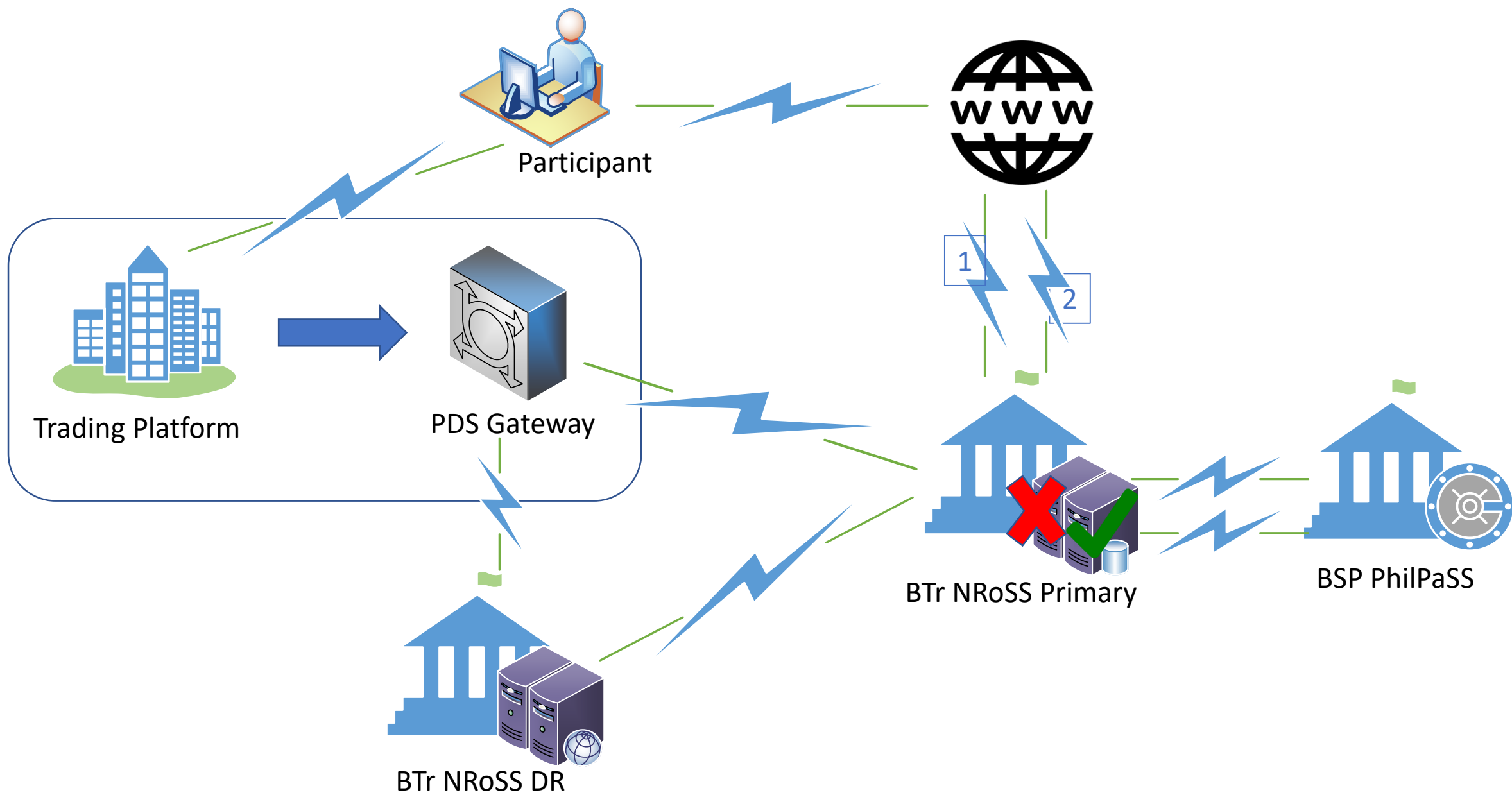
A Venn diagram consisting of three overlapping circles in shades of blue. A horizontal white band cuts across the middle of the circles. The text 'NRoSS' is centered in the white band, and 'Business Continuity' is centered in the bottom circle.

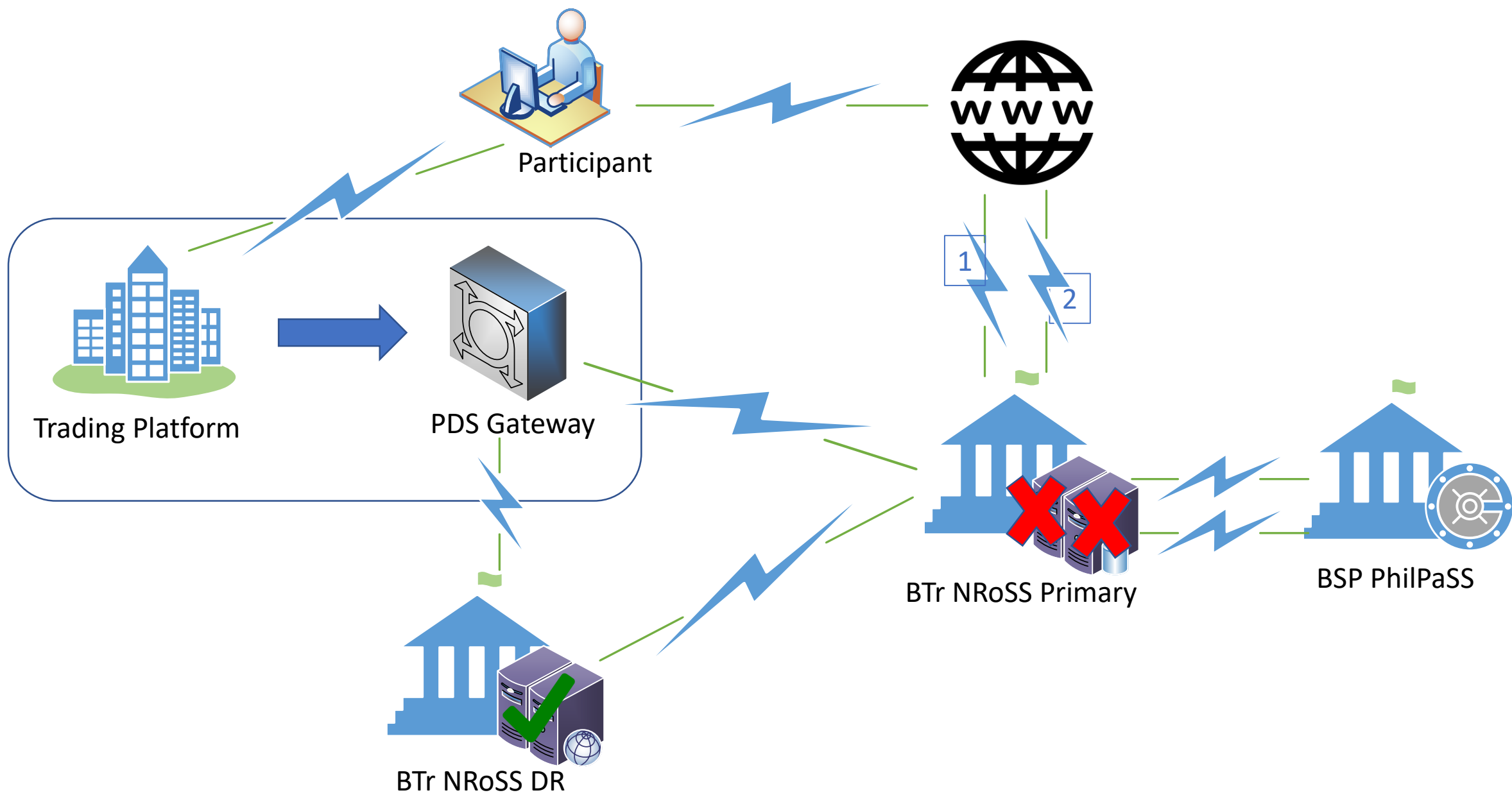
NRoSS

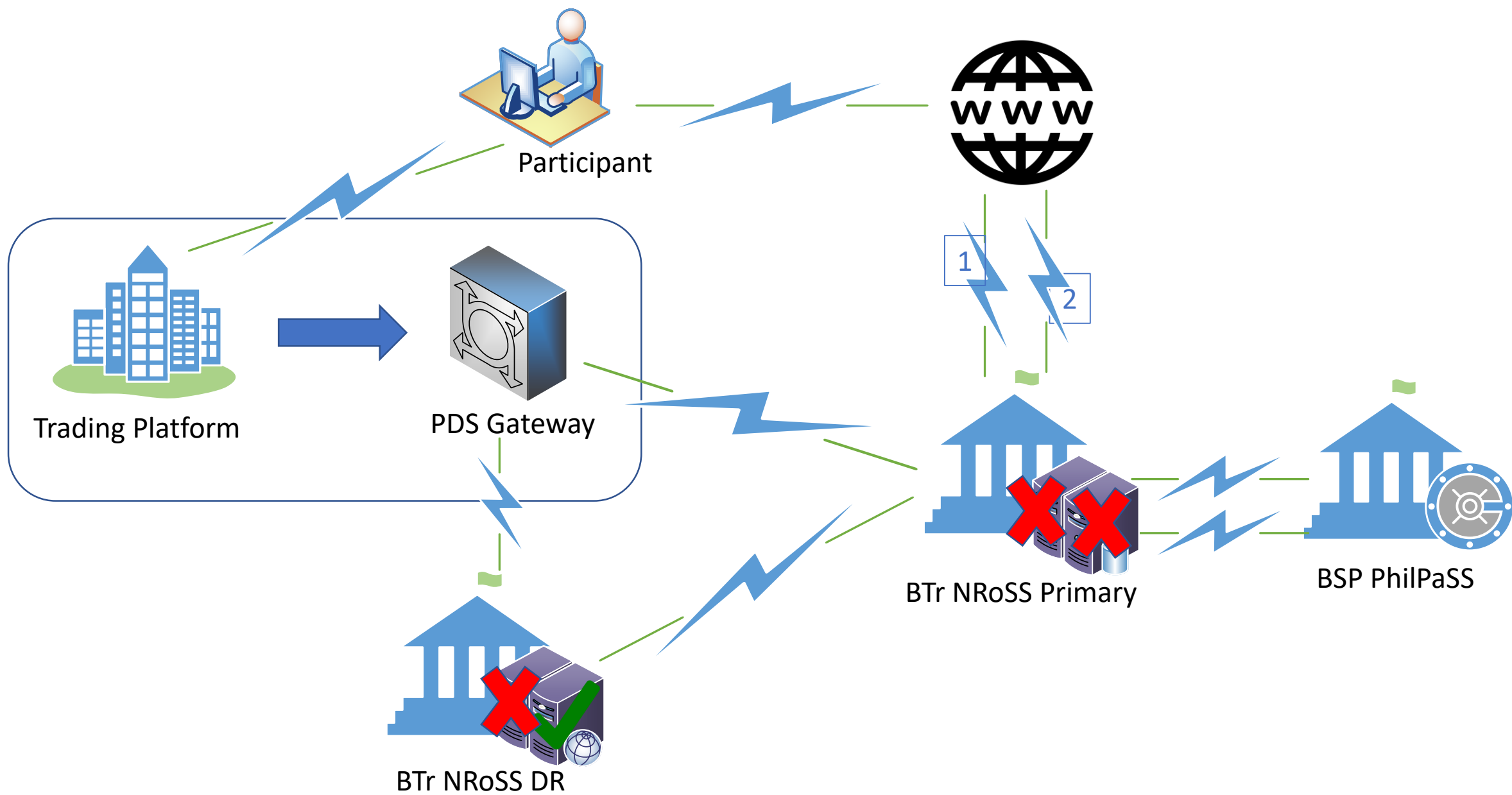
Business Continuity

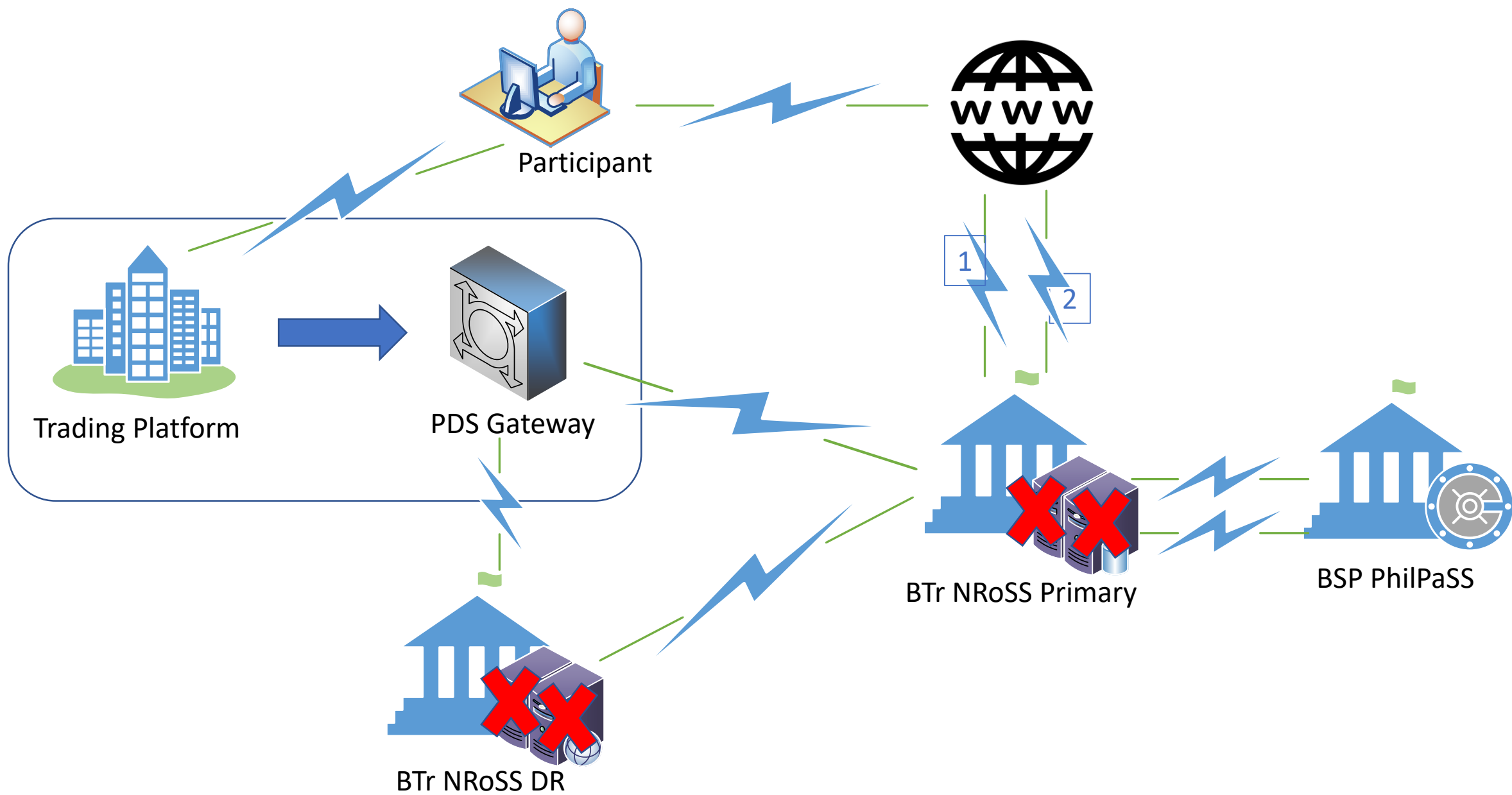














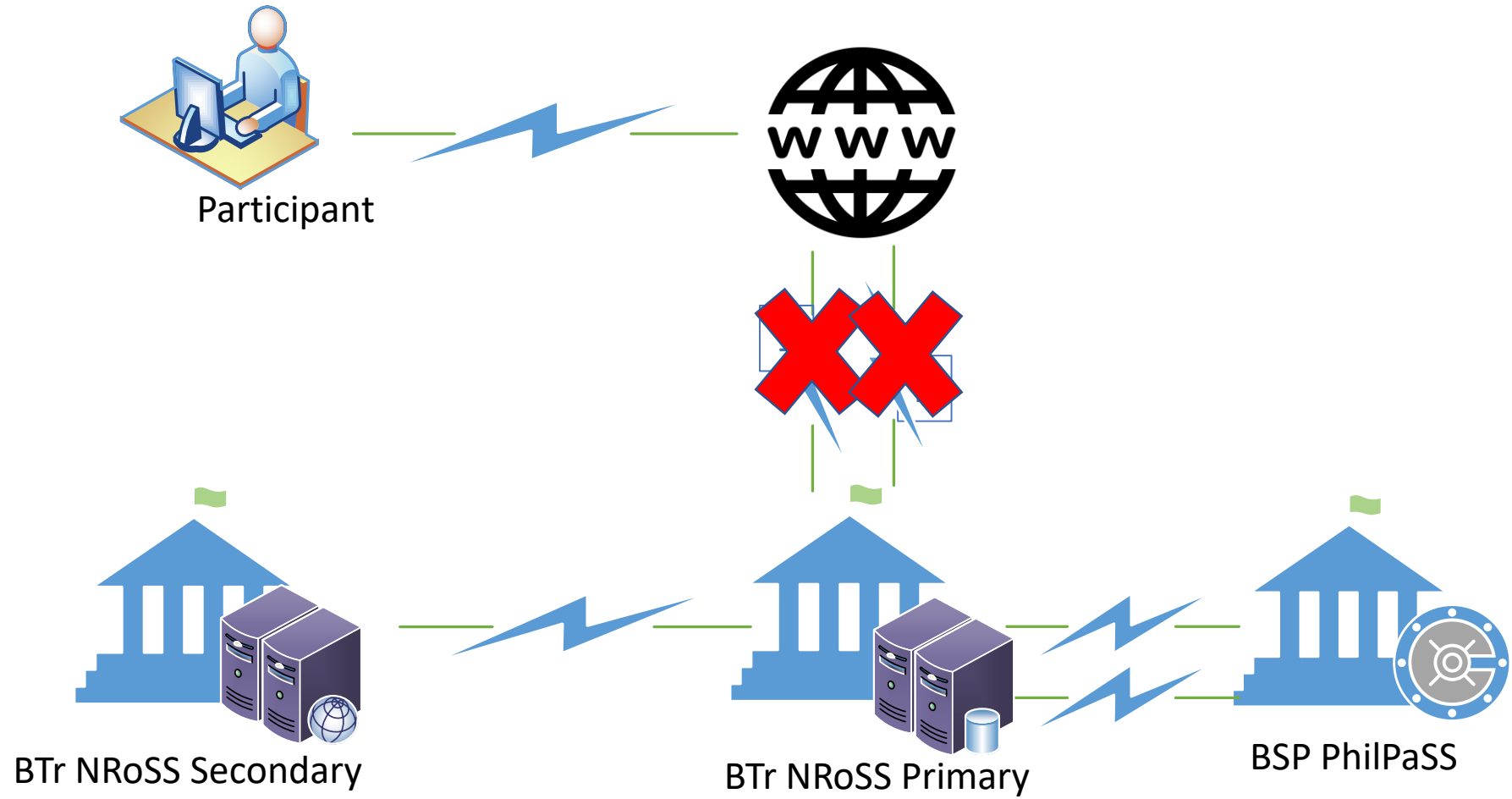
Scenarios

Auction



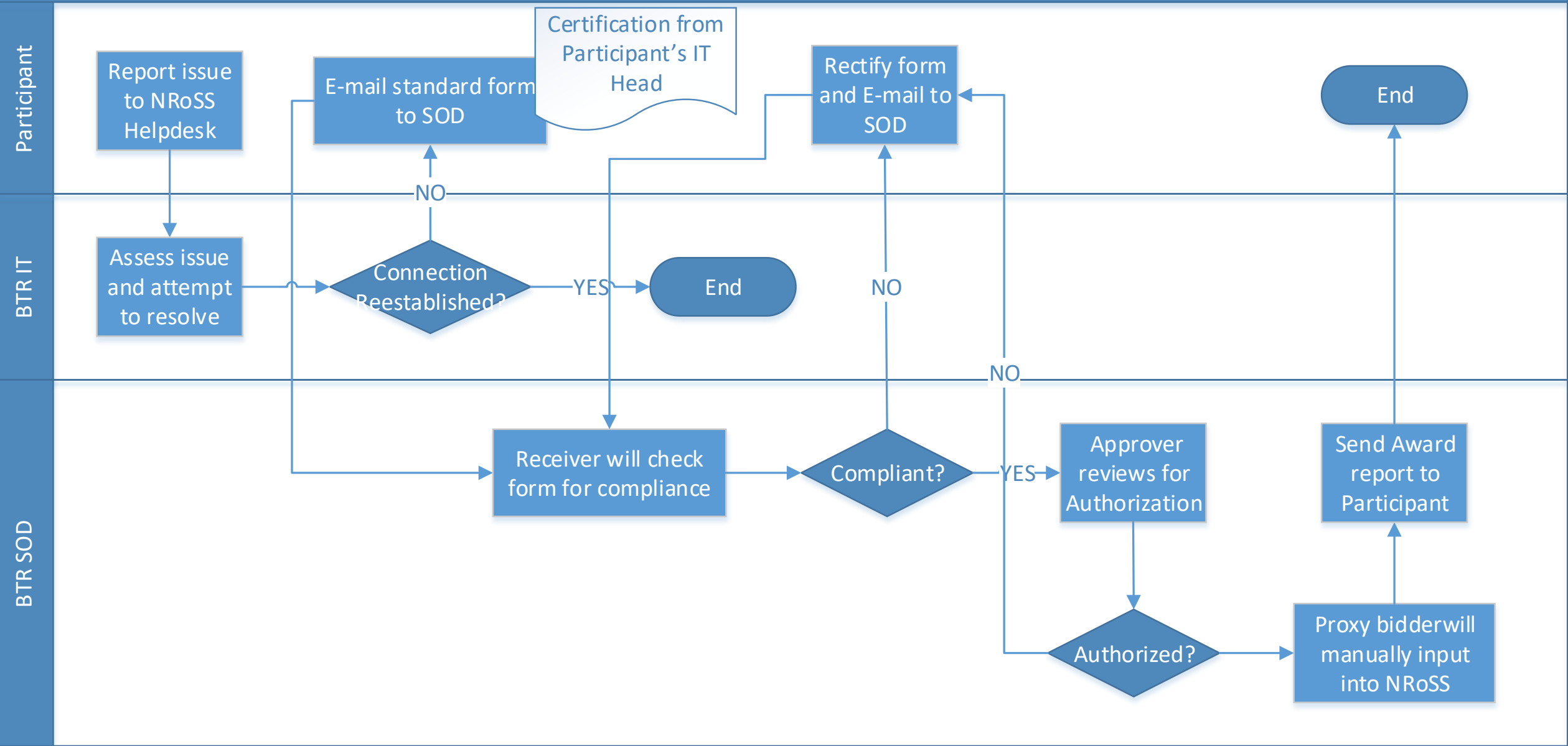
Scenarios

Participant cannot connect to NRoSS



Participant cannot connect to NRoSS

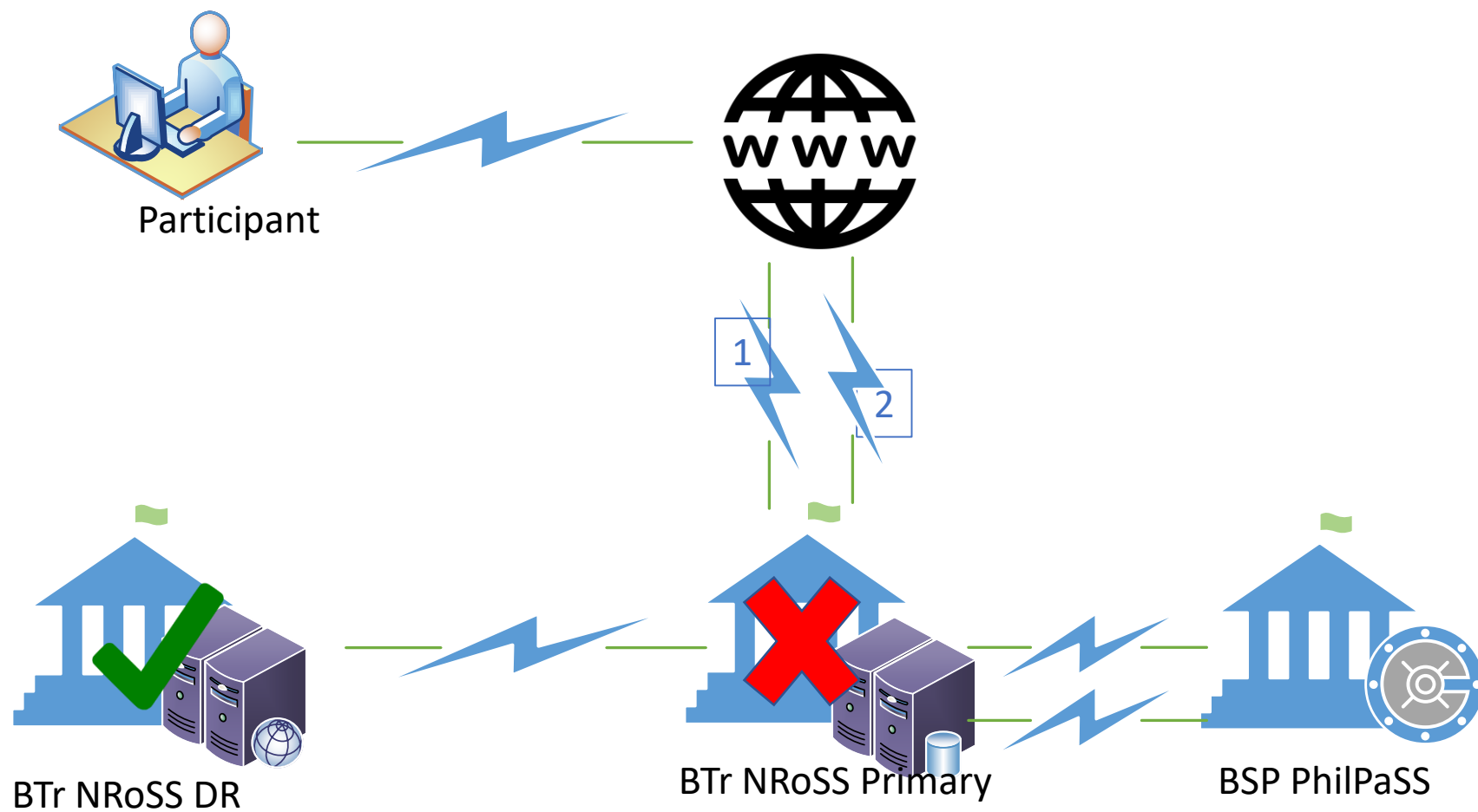
Phase

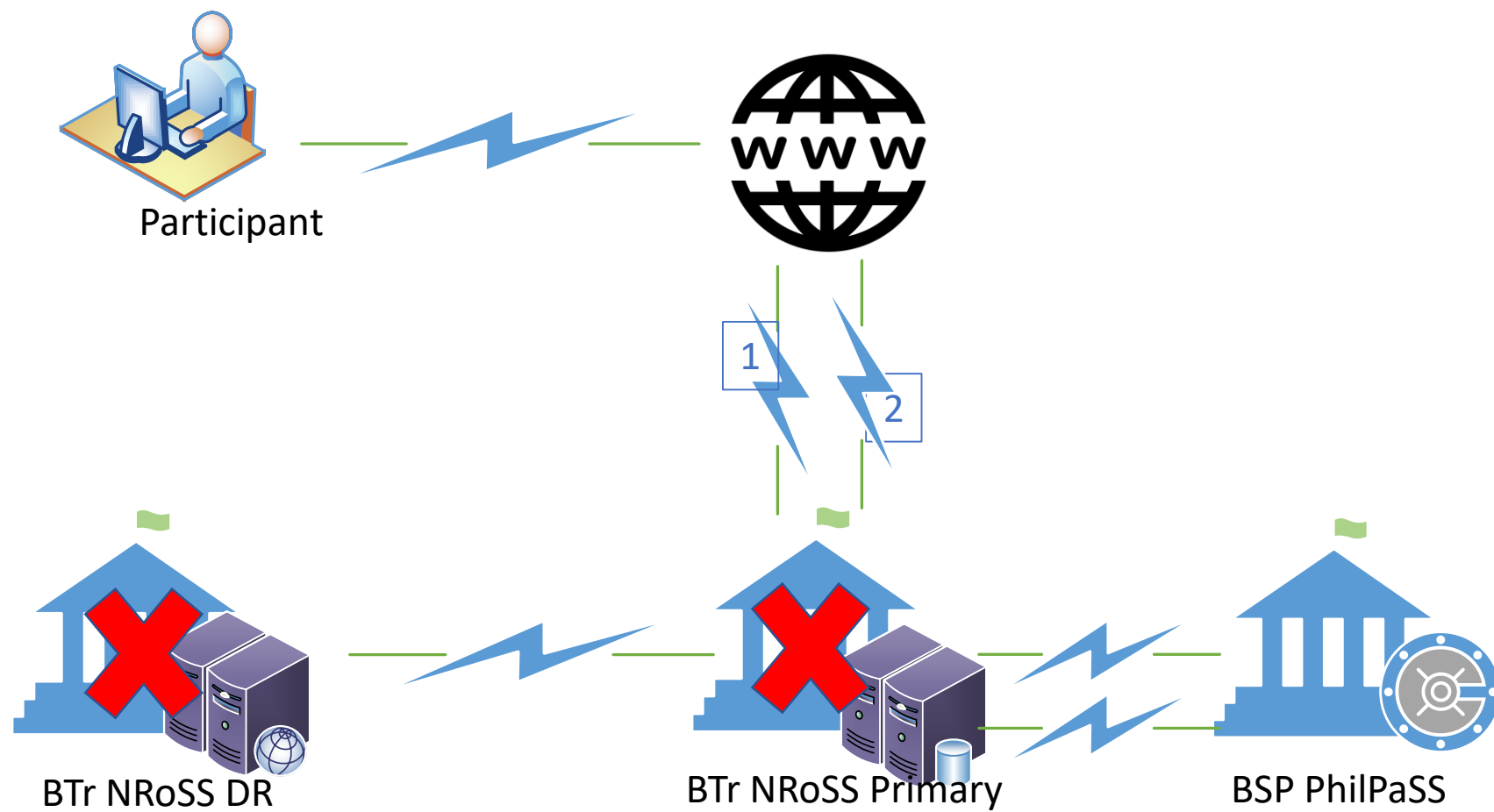




Scenarios

NRoSS System is down



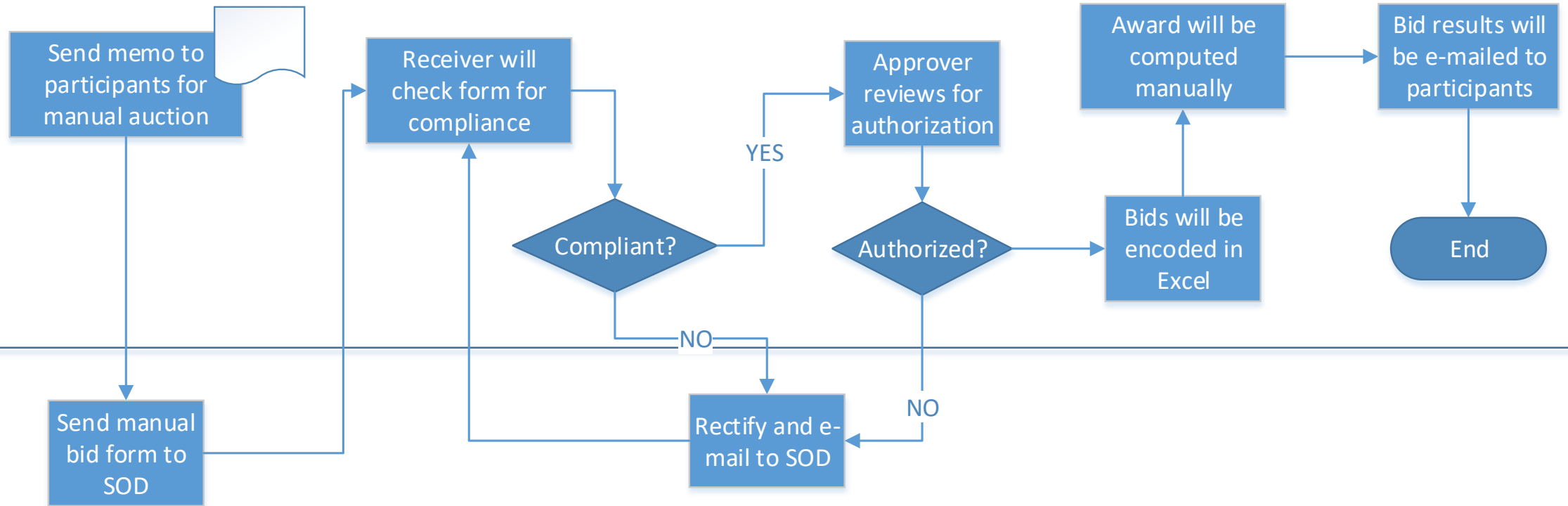


NRoSS is down

Phase

BTr SOD

Participant





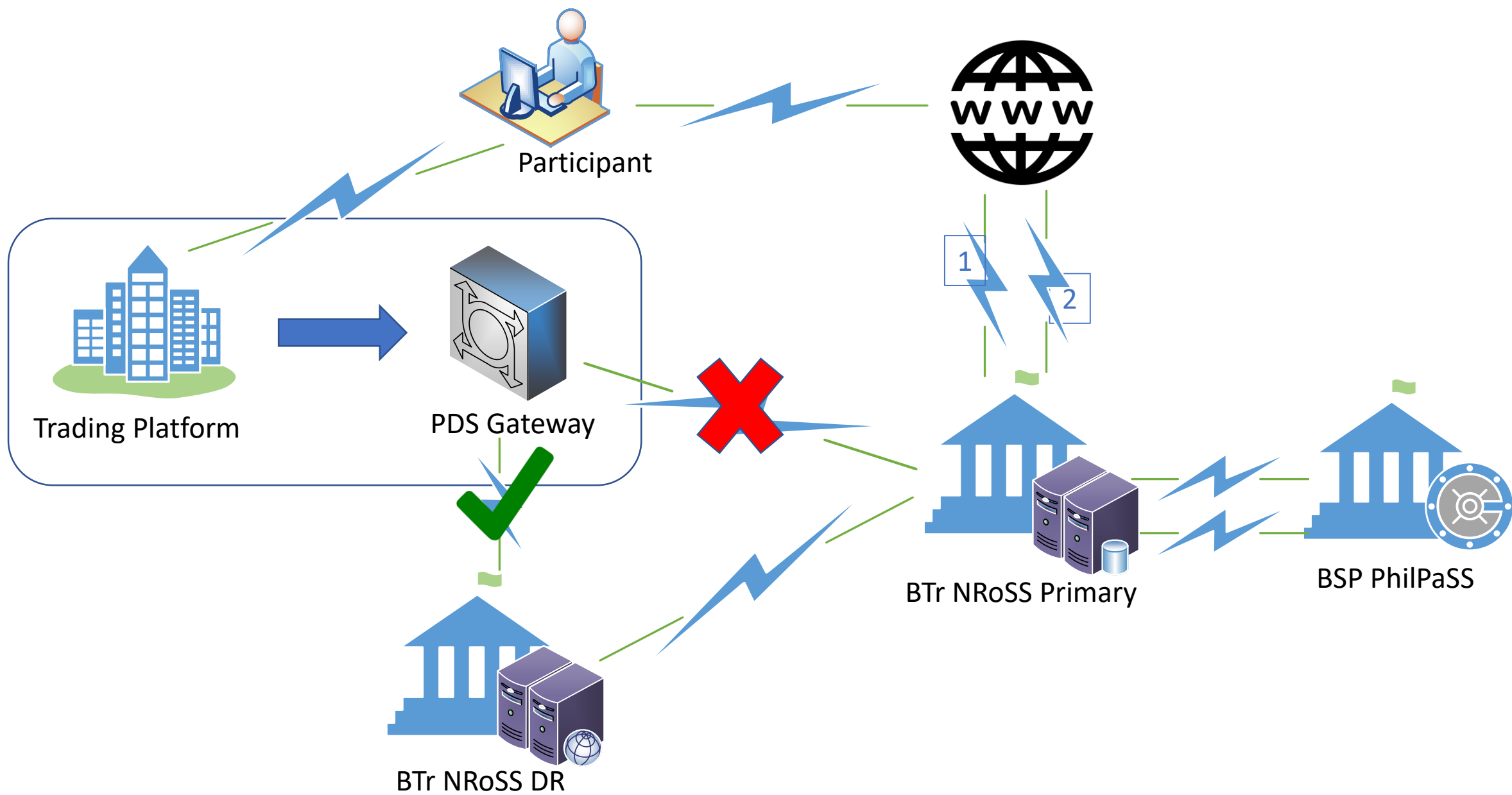
Scenarios

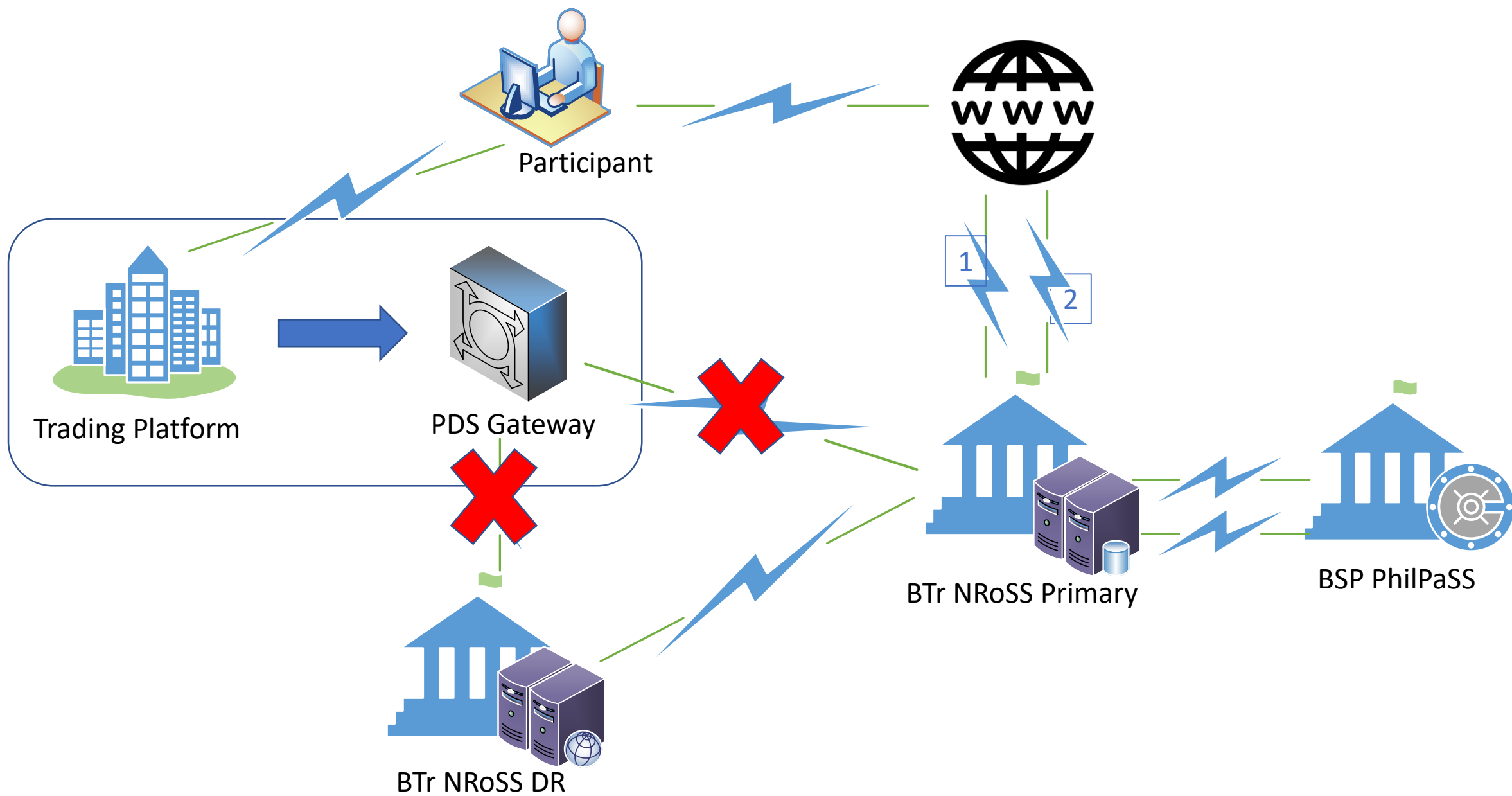
Secondary Trading



Scenario 1

Breakdown of link between PDS Gateway and NRoSS





Temporary downtime of link between NRoSS and PDS Gateway

Phase

PDS

PDS Gateway will transmit trades upon reinstatement of connectivity

End

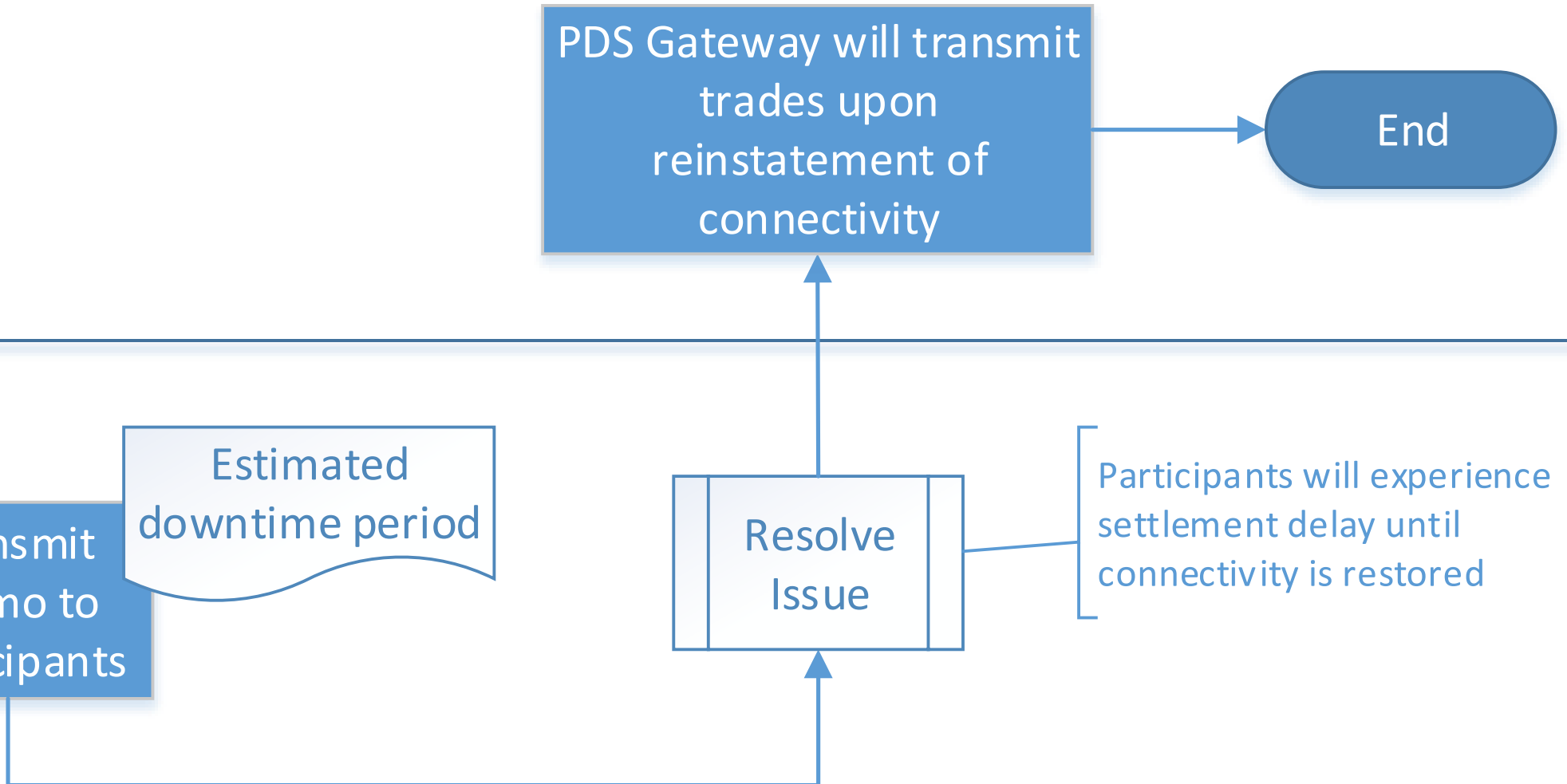
BTR

Transmit memo to participants

Estimated downtime period

Resolve Issue

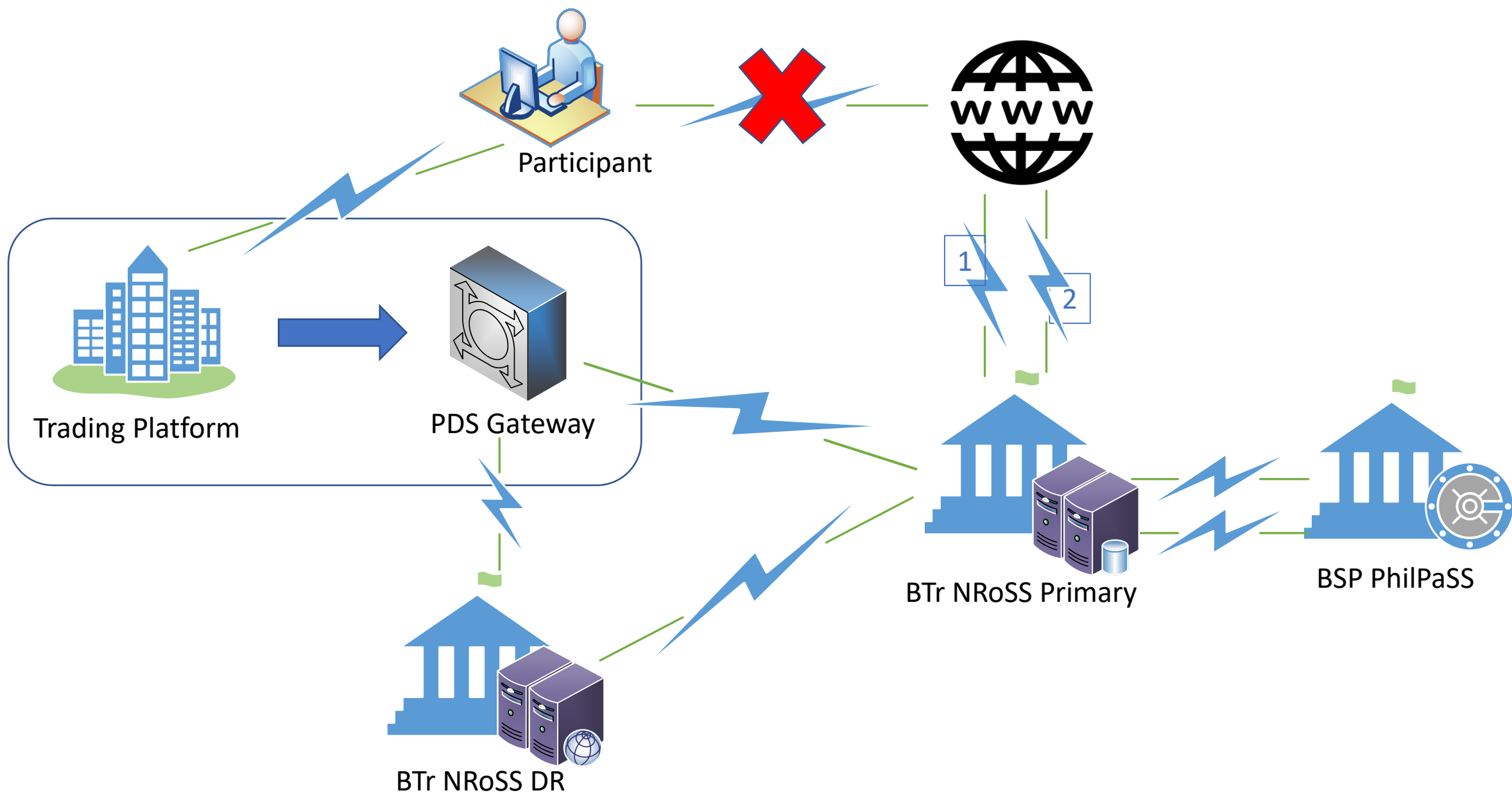
Participants will experience settlement delay until connectivity is restored





Scenario 2

Participant cannot connect to NRoSS



Participant cannot connect to NRoSS

Phase

Participant

Report issue
to NRoSS
Helpdesk

Go to NRoSS Satellite
BCP Room to perform
transaction

End

BTR IT

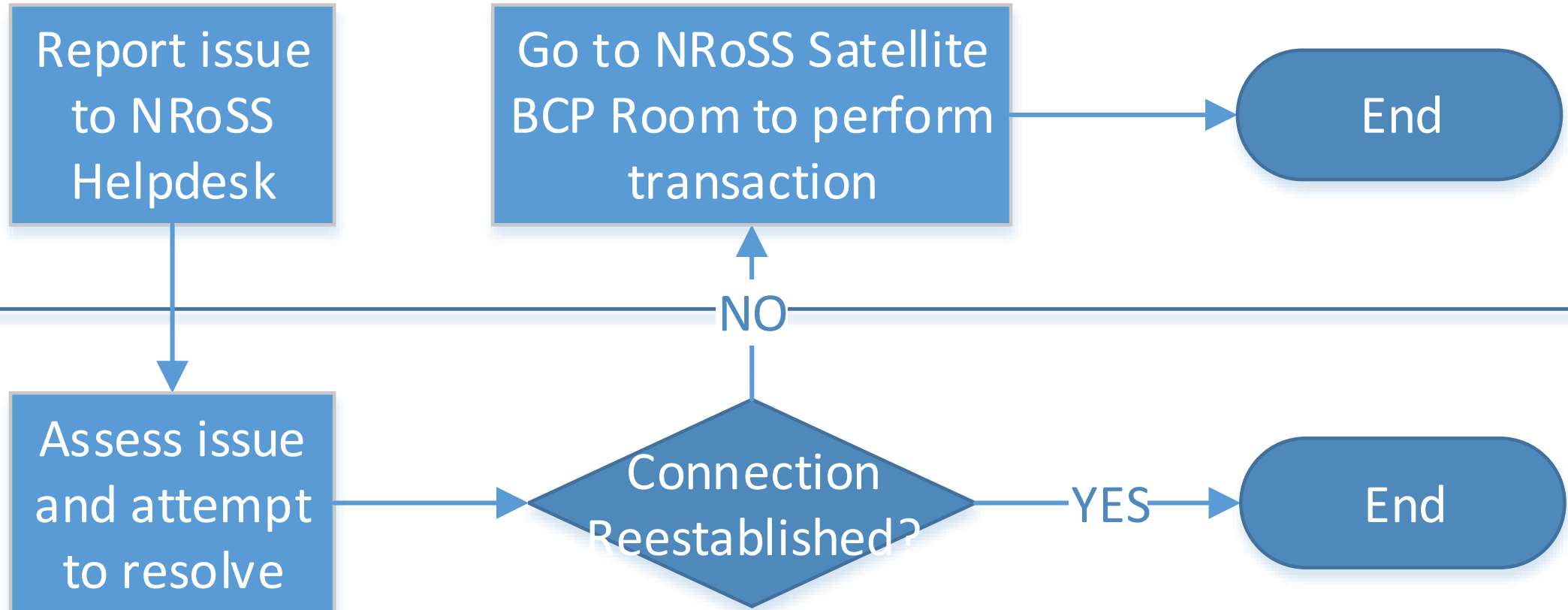
Assess issue
and attempt
to resolve

Connection
Reestablished?

YES

End

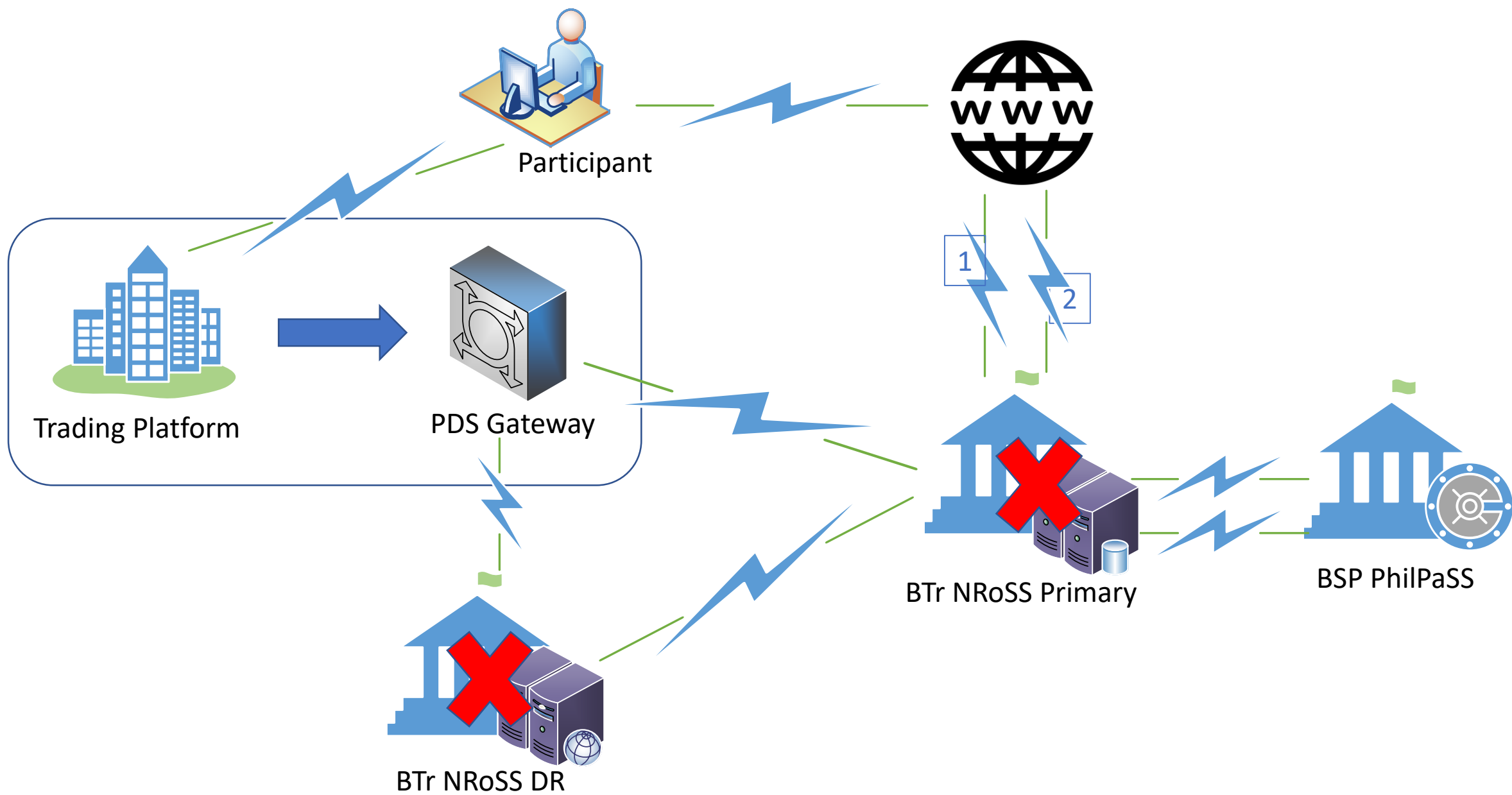
NO





Scenario 3

Temporary downtime of NRoSS



Temporary downtime of NRoSS

Phase

PDS

BTR

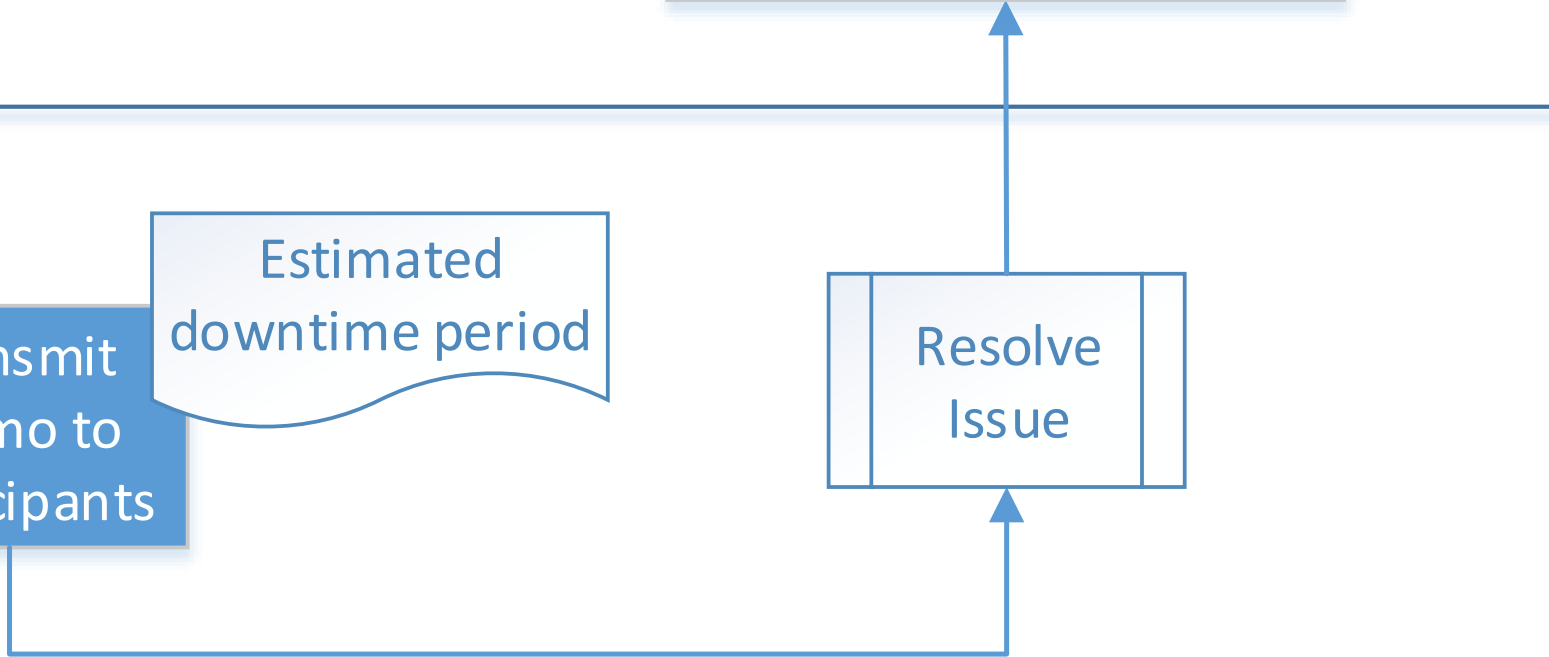
Transmit
memo to
participants

Estimated
downtime period

Resolve
Issue

PDS Gateway will transmit
trades for settlement
upon reinstatement of
NRoSS

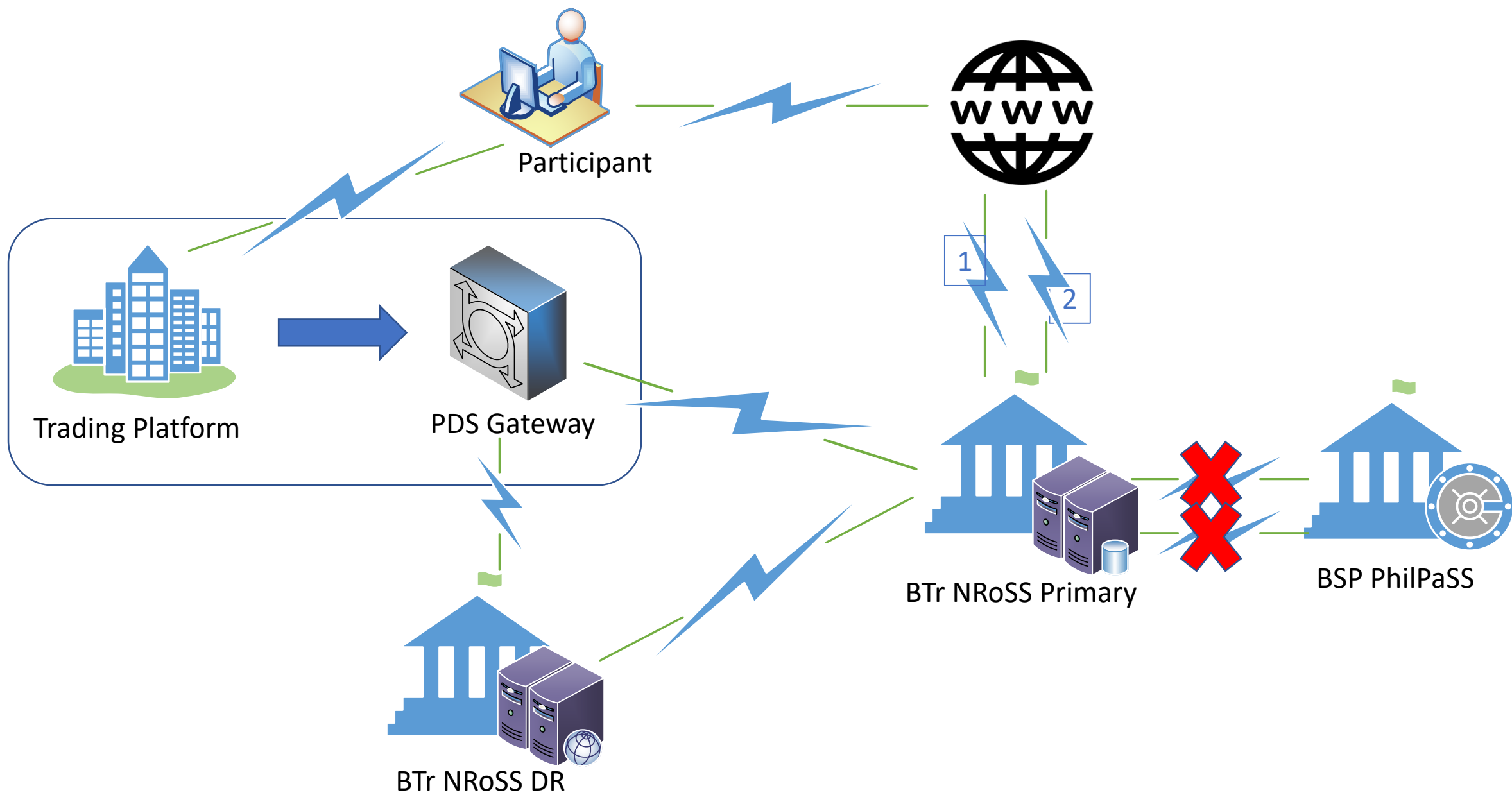
End





Scenario 4

Temporary downtime of link between NRoSS and PhilPaSS



Temporary downtime of link between NRoSS and PhilPaSS

Phase

PDS

NRoSS will transmit cash settlement instructions upon reinstatement of connectivity

End

BTR

Transmit memo to participants

Estimated downtime period

Resolve Issue

Participants will experience settlement delay until connectivity is restored

